

全国免费服务热线
400-118-2068

发电梯联盟智造



关注微信公众号

联盟电梯（苏州）有限公司
UNITED ELEVATOR (SUZHOU) CO., LTD

江苏省苏州市吴江区七都镇七都大道187号
No.187, Qidu Avenue, Qidu Town, Wujiang District, Suzhou City, Jiangsu Province
电话/Tel: 0512-82862962
传真/Fax: 0512-82862966
网址/Web: www.un-elevator.com

上海分公司

上海市静安区恒丰北路100号1807室
Room 1807, No. 100, Hengfeng North Road, Jing'an District, Shanghai
电话/Tel: 021-56554248
邮箱/E-mail: united1995@163.com

本书为一般信息类出版物，我们保留随时更改产品设计和说明的权利。
本书的任何字句，无论其字面意思或含义，对于任何产品及该产品的用途和质量，或者任何购销合同条款的表述与更改均不承担任何责任。

2023年A版



发电梯
联盟智造

FREIGHT ELEVATOR ESCALATOR

载货电梯/自动扶梯



联盟电梯（苏州）有限公司
UNITED ELEVATOR (SUZHOU) CO., LTD

Solutions To Elevator Safety

电梯安全革新解决方案 轿厢绝对值信息系统

联盟电梯轿厢绝对值信息系统采用先进的磁栅尺技术以高精度测量电梯轿厢在井道中的位置，使电梯精准到达指定楼层。当电梯发生超速或其他故障时，会立即断开安全回路或出发电子安全开关，保证运行安全。无论是高速电梯还是标准型电梯，新安装电梯还是旧梯加装均可广泛适用。

It adopts advanced magnetic scale technology to measure the position of the elevator car in the shaft with high precision for the car lift of UNITED elevator so that the elevator is able to reach the designated floor accurately. When overspeed or other faults occurs, it will disconnect the safety circuit or trigger the electronic safety switch at once to ensure safe operation, which is widely applicable to high-speed elevators, standard elevators, newly installed elevators and old elevators.

毫米级精准测量

轿厢位置实时监测精度可达0.1mm。

Accurate measurement to the millimeter

The real-time monitoring accuracy of the car position is able to reach 0.1mm.

0.1mm

精准监测

永不错层

智慧梯控断电后无需返回基站矫正,也能精准提供轿厢的井道位置。

Never staggered floor

Smart elevator control allows providing accurate shaft position of the car lift without returning to the base station for correction after power failure, and it can also accurately provide the shaft position of the car lift.



智慧梯控断电后无需回
基站矫正

快捷安装

快速简单安装,比传统节省50%以上。

Fast installation

It's installation is quick and simple, and it saves 50% installation time than traditional one.

50%+

快捷安装节省50%以上

节能部件

在拥有全面安全功能的同时,极大节省了部件安装,如传统的极限开关、光电ETSL系统、平层开关。

Energy-saving parts

It greatly saves time to install the parts while taking account comprehensive safety, such as traditional limit switch, photoelectric ETSL system and leveling switch.

3大节能部件

拥有全面安全功能





Goods lift

载货电梯

随着居住空间不断向上延伸,载货电梯肩负起运载货物的重任。联盟载货电梯采用先进的技术和坚固的材质,使电梯运行不惧各类恶劣环境,保证了货物上下运载中的平稳、安全及迅速。

With the constant extension of living space, goods lift takes on the carry of goods. UNITED good lift adopts the advanced technology and solid materials, making elevator operation free from all kinds of severe environment, guaranteeing stable, safe and rapid goods load;

大宽度开门, 大自由进出

为方便大体积货物的自由进出,联盟载货电梯系列产品均采用多折式轿厢结构,让轿门打开时可达最大宽度。

Door opening with large width, free access

UNITED goods lift series products adopt multi-fold lift car structure in order to make free access of large size goods convenient, realizing the largest width in door opening;



发电电梯 联盟智造

联盟电梯首创发电电梯,品质提升的同时为使用单位节省成本,载重2000kg联盟发电货梯正常使用一次上下大约节省电费0.10元,年节省费用约为:0.10元/次×150次/天×365天=5475.00元。

Electric power generation elevator, united intelligent manufacturing

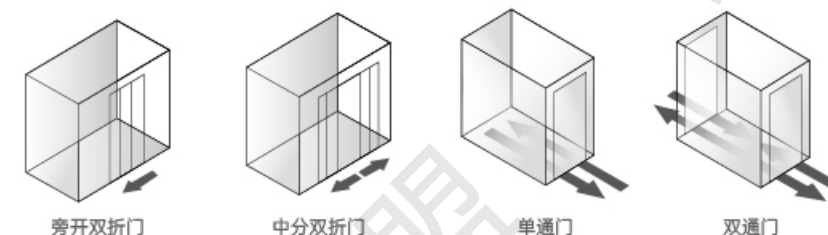
The newly-created power generation elevator of United Elevator is able to improve the quality and save cost for the users. The united power generation freight elevator with the carrying capacity of 2000kg can save the electrical charge of about 0.10yuan each time and annual electrical charge of 5475 yuan, namely, 0.10 yuan / time × 150 times / day × 365 days.

多种开门方式

为了满足用户的不同进出要求,联盟载货电梯有旁开门、中分双折门、单通门、以及双通门四种开门方式供选择,与工厂、仓储、百货商场、物业中心等建筑物结构灵活匹配。

Multiple door opening ways

In order to satisfy demands of users, UNITED goods lift have four ways of door opening including side opening door, middle two-fold door, single access door, dual access door, which match flexibly the construction structure like factory, warehouse, shopping mall and real estate center and so on;

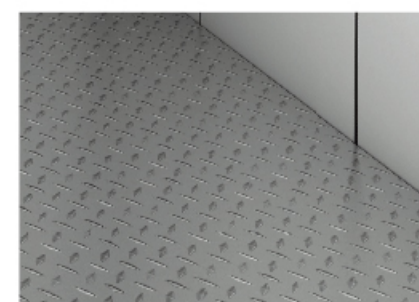


高强度材料, 抗衰耐用

联盟载货电梯不仅采用高强度型材制作轿厢,还对轿厢底盘进行特殊加强设计,使得自身产品更加经久耐用,不易老化。

Materials with high strength, anti-decay and durable

UNITED goods lift not only adopts high-strength materials, but also makes special reinforced design over the chassis of lift car, making products durable and anti-aging.



没有毫厘之差, 更无千里之缪

联盟载货电梯用细小优势奠定品牌之基,其产品的平整精度可控制在毫米级范围之内。

There is no least error as well as great mistake

UNITED goods lift lays a solid foundation for the brand with the slight advantage, which controls the leveling accuracy within millimeters.



Goods lift without machine room

无机房载货电梯



联盟无机房载货电梯是根据市场需求应运而生的。其紧凑的结构设计，可节约空间，符合各类建筑的美观度设计需求。无齿轮曳引机的运用，更起到了节能降耗的目的，迎合电梯未来发展趋势，是百货大厦、图书馆、仓库等场所首选的载货垂直运输工具。

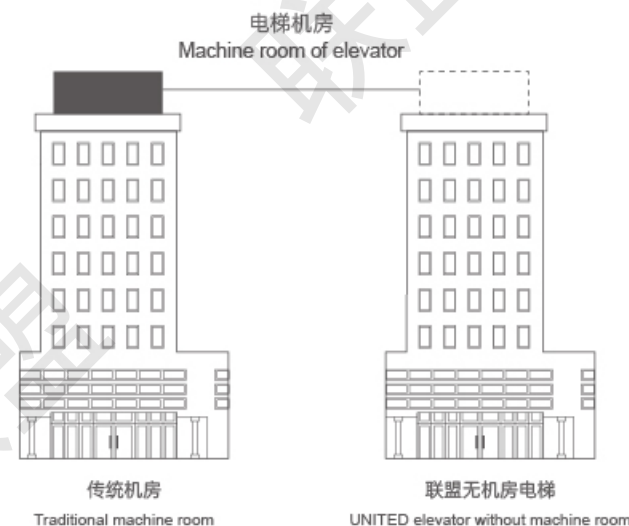
UNITED goods lift without machine room emerges catering to market demands. Its compact structural design can save space, which conforms to the aesthetic demands of all kinds of buildings. The application of gearless machine plays the role of energy saving and reduction, catering to the future development of elevators, which is the top choice for shopping mall, library and warehouse.

大吨位载重、平稳运行

通过最佳的零部件和最合理的结构设计，在进行大吨位运输的情况下依然保持着低噪音、低振动运行。

Large-tonnage load, stable operation

Keep operation with low noise and vibration under the circumstance of large tonnage transport through the best parts and the most reasonable structural design.



安装简易高效

在电梯应用中，安装难易也是影响货运条件的重要因素。联盟无机房载货电梯能为客户提供高效易行的安装方案，保证建筑工程的正常进度。

应用场合广泛

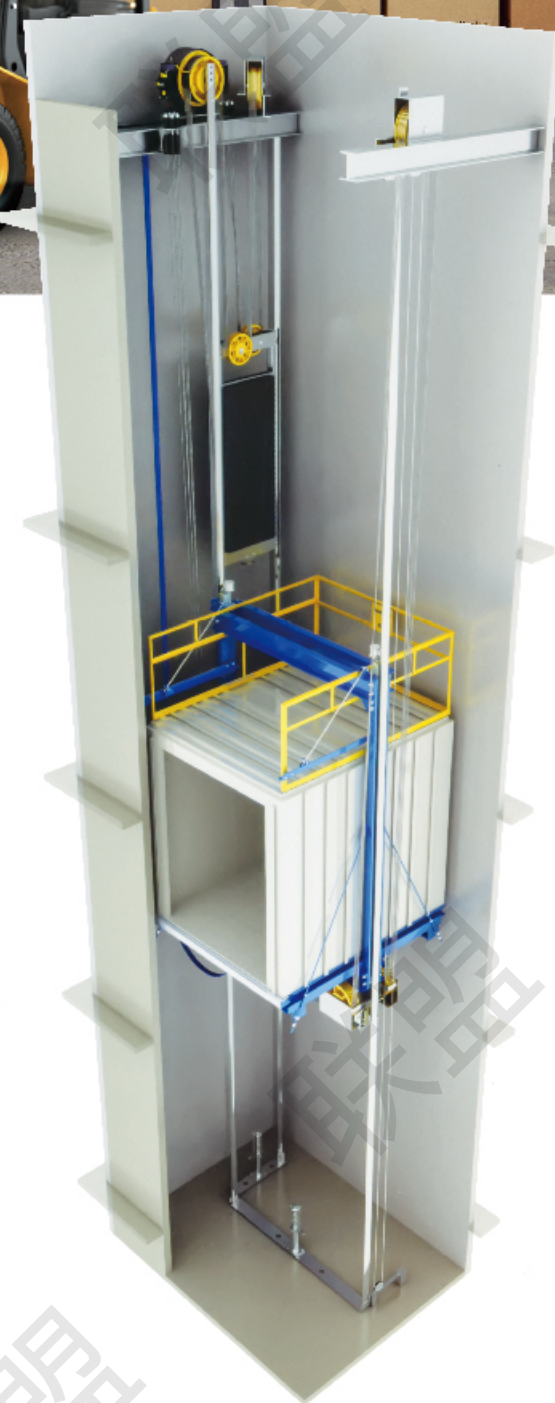
与传统有机房载货电梯相比，联盟无机房载货电梯应用场合广泛，更适用于现代社会的垂直交通领域。

Simple and highly efficient installation

In elevator application, the simplicity of installation is also important factor influencing conditions of carriage; UNITED goods lift without machine room can provide highly efficiency and easy installation plans for consumers, guaranteeing normal speed of construction engineering.

Wide application occasions

Compared with goods lift with machine room, UNITED goods lift without machine room has wide application occasions which are adaptable to vertical transport of modern society.



Lift car decoration

轿厢装潢

UN-F001

标配轿厢 (Standard)

吊顶: 喷塑钢板
通风方式: 圆形风扇
轿壁/轿门/门套: 喷塑钢板+电梯专用防撞条
照明: LED筒灯
操纵箱、外呼: 发纹不锈钢+轿内LED显示
地板: 花纹钢板

防撞条选配(Optional anti-collision strip)

Suspended ceiling: spraying plastics
Ventilation: round fan
Lift wall, car door, door pocket: spraying plastics steel plate+exclusive anticollision strip
Illumination: LED down lamp
Controller box, external call: hairline stainless steel+LED display in the car
Floor: rifled steel plate



UN-F002

选配轿厢(Optional)

吊顶: 发纹不锈钢
通风方式: 圆形风扇
轿壁/轿门/门套: 发纹不锈钢+电梯专用防撞条
照明: LED筒灯
操纵箱、外呼: 发纹不锈钢+轿内液晶显示
地板: 花纹钢板

Suspended ceiling: Hairline stainless steel
Ventilation: round fan
Lift wall, car door, door pocket: Hairline stainless steel+exclusive anticollision strip
Illumination: LED down lamp
Controller box, external call: hairline stainless steel+LCD display in the car
Floor: rifled steel plate



操纵箱和召唤盒

Controller box, calling box

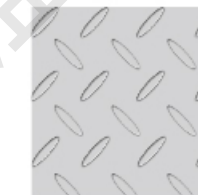


UN-FC01

发电电梯可选配7寸液晶显示
Power generation elevator
Optional 7 inch LCD display

地板

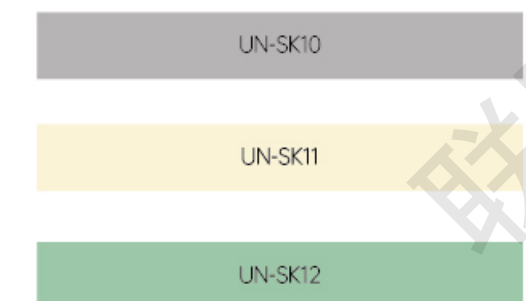
Floor



花纹钢板
Rifled steel plate

色卡

Color palette



厅门

Hall door



UN-TM10 标配 Standard

旁开式

厅门: 喷塑钢板(浅灰) 门套: 喷塑钢板(浅灰)

Side opening

Landing door: Spray steel plate(Light gray)

Jamb: Spray steel plate(Light gray)



UN-TM11 标配 Standard

双折中分式

厅门: 喷塑钢板(浅灰) 门套: 喷塑钢板(浅灰)

4-panels center opening

Landing door: Spray steel plate(Light gray)

Jamb: Spray steel plate(Light gray)



Large cargo lift

大载重载货电梯

联盟大载重货梯解决方案结合采用永磁同步无齿轮，曳引能力大，能满足大载重要求。载货电梯高强度型的轿厢底盘可以应对更大重量的货物运输，适应各个场所的运输环境和需求。

UNTIED large load freight elevator solution combines permanent magnet synchronous gearless, large traction capacity, and can meet the requirements of large-load. High intensity car chassis of freight elevator can cope with a larger weight goods transport. It suits the transport environment and demands in various occasions.

举重若轻 稳若磐石

大宽度开门，满足大型货物的自由进出；
高强度抗压型材，满足大重量货物的运载；
高密度平层效果，满足人与货物的出入；

It stably bears any heavy burden at ease

Large width door-opening satisfies free entry / exit of large goods;
High intensity compression-resistant section material satisfies transport of large weight goods;
Highly intensive leveling effect satisfies entry and exit of both passengers and goods;

Service lift

杂物电梯

联盟杂物电梯架构坚固、构造独特,具有小巧精悍的优越性。特别采用的微电脑控制系统,更为联盟杂物电梯增强了安全运行的技术保障。50kg—300kg的承重范围,广泛服务于各类杂物的上下输送;窗台式和落地式的双重选择,满足不同场合货物进出的方便性需求。

UNTIED service lift has solid framework, unique structure and exquisite excellence; Especially adopted computer control system, reinforce technical guarantee of safe operation; the bearing scope from 50 kg to 300 kg serves wide transport of all kinds of sundries; dual choices of sill and console satisfy convenient demands of access for different occasions.

人性化的开门方式满足您的需求

联盟杂物电梯,采用多种开门方式供用户选择,同时可根据用户的需求和使用情况专门设计。

Humanistic door opening way satisfies your demands

UNTIED service lift adopts multiple door opening ways for users; make exclusive designs according to users' demands and use.



窗口型
Window type



窗口型
Window type



落地型
Landing type



落地型
Landing type





Escalator

自动扶梯

纵横交错,让错落有致的格局点缀了空间,以强载强运的实力为城市的交通奉献一己之力。联盟自动扶梯系列产品拥有坚固耐用、安全可靠、运行宁静、低碳环保等多重优势,以科学合理的结构设计,完美融入于车站、码头、机场、地下通道等人流集中的公共场所,为乘客带去舒适快捷的交通。

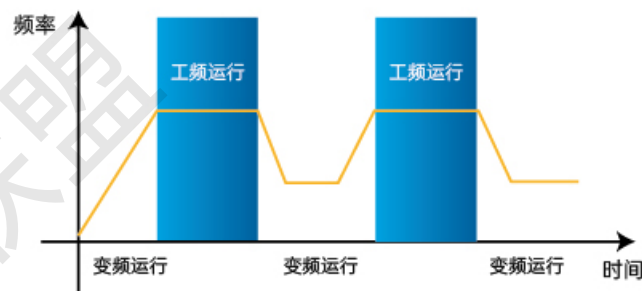
Criss-cross allows well-proportioned pattern intersperse the space; contribute to city traffic with powerful strength; UNTIED escalator products possess multiple advantages like sturdy, durable, safe, reliable, quiet, low-carbon and environmental friendly features; it integrates perfectly into public spaces like station, wharf, airport, souterrain and so on with scientific and reasonable structure design, bringing about comfortable transport for passengers.

先进的技术支持

微机变频技术(VVF)和人机工程研究成果的应用,使扶梯性能更完美,运行更舒适;

Advanced technical support

The application of VVVF and ergonomics research results makes performance perfect and operation comfortable.



Moving walk

自动人行道

联盟自动人行道,把舒适与安全相结合,可提供合理的水平和倾斜客流运输方案,具有运行平稳、噪音低、经久耐用、维修方便等特点,为公共空间客流运输提供优质的解决方案。

UNTIED moving walk combines comfort and safety, provides reasonable leveling and inclined transport plans, which is characteristic as stable, low noise, durable, and convenient maintenance and so on, providing superior solution for public space transportation.

结构紧凑,设计自由度更大

联盟自动人行道梯面采用短踏板设计,大大缩小了其空间跨度,使整机结构更为紧凑,不仅为建筑节省了更多的空间,也使其通用性和灵活度更高,可轻松融入各类建筑。

Compact structure, free design

UNTIED moving walk adopts short pedal design, contracts greatly space span, makes machine structure compact, which not only saves space for construction, but also integrates easily into all kinds of buildings with its universality and flexibility.

多彩装饰,空间点缀更靓丽

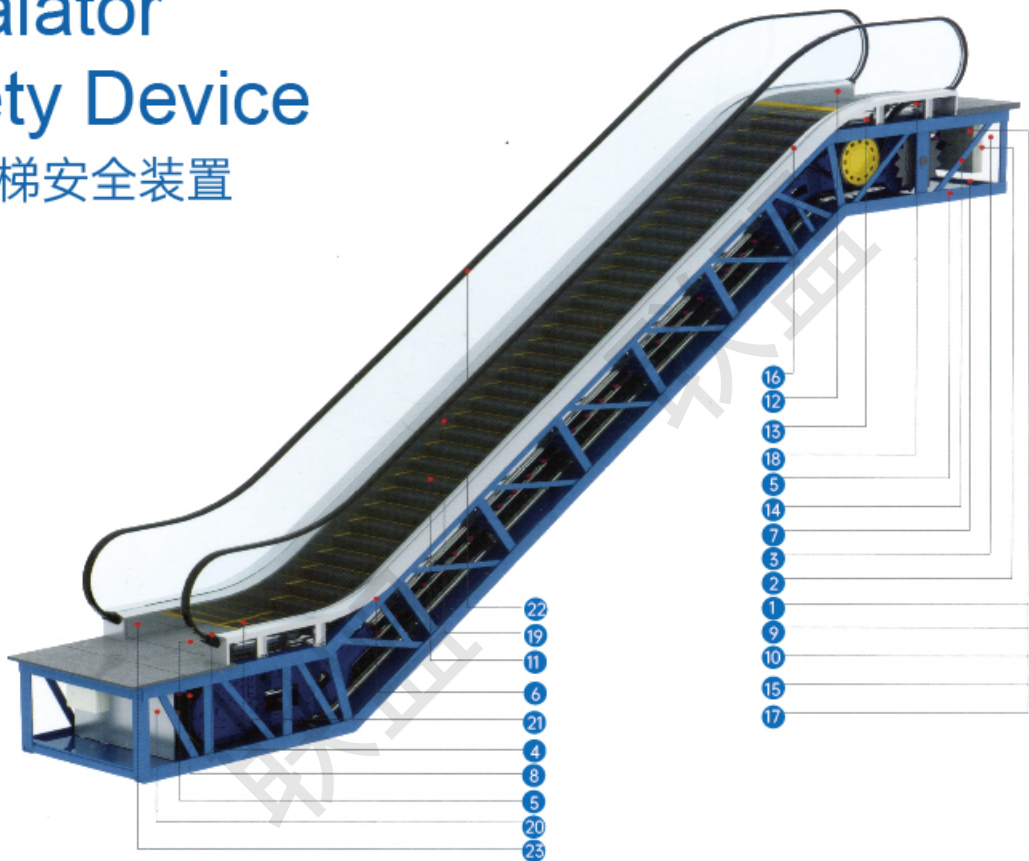
联盟自动人行道的扶手带颜色多样,款式新颖,可满足不同场所的个性化需求;其前沿板采用冲压花纹,立体感十足,不仅防滑,更美观大方。

Colorful decoration, beautiful space embellishment

The handrail of moving walk is with various colors and styles which can satisfy personal demands of different places; the leading edge plate adopts stamping strip with third dimension, which is not only anti-slide, but also beautiful.



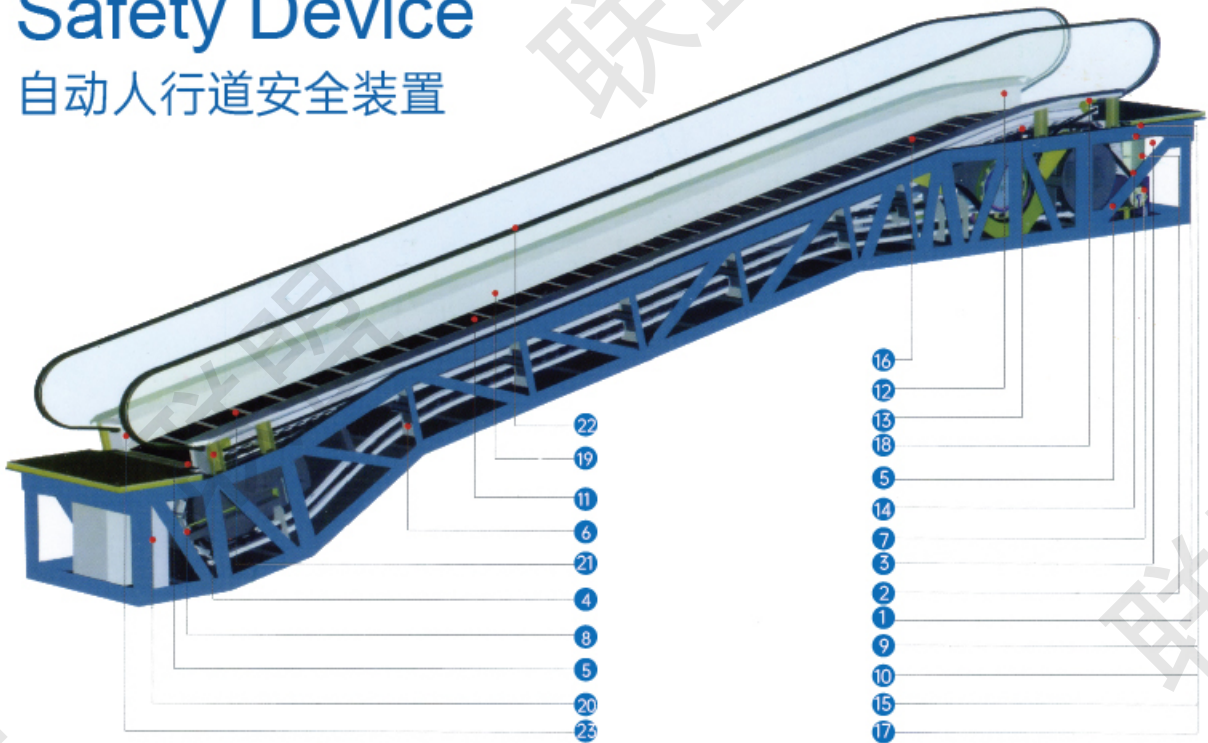
Escalator
Safety Device
自动扶梯安全装置



标配 ● 选配 ○
Standard Optional

功能 Function	说明 Description	备注 Remarks
1. 缺相、错相保护: Lack of phase, error phase protection:	如发生缺相或错相,自动扶梯(自动人行道)将自动停止 If lack of phase or error phase has been checked out, the escalator (auto-walk) will automatically stop the operation.	●
2. 电机马达超载保护: Motor over-load protection:	电流超过额定电流的 15% 则扶梯自动停止运行 When the current exceeds 15% of the current rating, the escalator will automatically stop the operation.	●
3. 电器回路保护: Electrical appliance loop protection:	提供自动电路断开装置以保护自动扶梯(自动人行道)的电路和电源部件。 It offers the automatic circuit disconnecting device to protect the circuit and mains components of the escalator (auto-walk).	●
4. 扶手带入口保护: Handrail inlet protection:	当外物被夹在扶手带入口处时,自动扶梯(自动人行道)会自动停止运行 When some foreign substance has been clipped in the handrail inlet, the escalator (auto-walk) will automatically stop the operation.	●
5. 梳齿板安全保护装置: Comb plate safety device:	当外物被夹入梳齿时,自动扶梯(自动人行道)将自动停止运行。 When some foreign substance has been clipped in or between the combs, the escalator (auto-walk) will automatically stop the operation.	●
6. 梯级塌陷保护装置: Step sagging protection device:	当发现梯级有异常的弯曲时,自动扶梯(自动人行道)会在梯级进入梳齿板前停止运行。 When there is abnormal step bending, the escalator (auto-walk) will stop the operation before the step entering into the comb plate.	●
7. 驱动链断裂保护: Broken drive-chain safety device:	当驱动链被过度拉伸或断裂时,自动扶梯(自动人行道)将自动停止运行。 when the drive-chain has been over-stretched or it is broken, the escalator (auto-walk) will automatically stop the operation.	●
8. 梯级链断裂保护: Broken step chain protection:	当梯级(板)链被过度拉伸或断裂时,自动扶梯(自动人行道)将自动停止运行。 when the step (plate) chain has been over-stretched or it is broken, the escalator (auto-walk) will automatically stop the operation.	●
9. 超速保护: Over-speed protection:	当自动扶梯(自动人行道)超速,将自动停止运行。 When there is over-speed to the escalator (auto-walk), it will automatically stop the operation.	●
10. 非操作逆转保护: Direction reversal protection:	当逆转操作而违反了预定的运行方向,自动扶梯(自动人行道)将自动停止运行。 when it comes the unintentional reversal of the direction of travel, the escalator (auto-walk) will automatically stop the operation.	●
11. 警戒线: Security line:	黄色合成树脂警戒线位于自动扶梯踏板的前部和两边,以防止乘客踏入相邻梯级的边缘及梯级和围裙板之间,在梯级两边的警戒线高于踏板表面(自动人行道提供可选黄色喷漆警戒线)。 The yellow synthetic resin security line is located in the front position and two sides of the escalator tread so that the passengers will not tread in-between the edge of the adjacent step and the lift group lengthened skirt panel. The security line on both sides of the step is higher than the tread surface. (The auto-walk offers the selective yellowspray-painted security line.)	●
12. 紧急停止按钮: Emergency stop button:	当按下该按钮时,自动扶梯(自动人行道)将停止运行。 When the button has been pressed down, the escalator (auto-walk) will stop the operation.	●
13. 围裙板保护: Skirt panel protection:	当外物被夹在围裙板和梯级之间时,自动扶梯(自动人行道)将自动停止运行。 When some foreign substance has been clipped in between the skirt panel and the step, the escalator (auto-walk) will automatically stop the operation.	●

Moving Walk
Safety Device
自动人行道安全装置



功能 Function	说明 Description	备注 Remarks		
14. 制动器保护: Brake protection:	当电力不足或任一安全装置动作时,制动装置将通过弹簧弹力作用使制动功能生效,使自动扶梯(自动人行道)停止运行。 When the electric force falls short of supply or it acts any of the safety device, the brake function goes into effect by the safety device through the spring resilience action. In this way, the escalator (auto-walk) stops the operation.	●		
15. 检修安全开关: Safety inspection switch:	检修保养时,防止扶梯启动的安全装置 It is a safety device to prevent from the escalator starting during the inspection and maintenance.	●		
16. 梯级照明: Step illumination	扶梯上下端,梯级下部装有照明以提醒乘客注意安全。 Illumination exists in the upper and lower ends of the escalator, in the lower part of the step in order to remind the passengers of the security matters.	●		
17. 启动警铃装置: Alarm bell starting device:	扶梯启动时警铃响起,以提醒乘客安全。 The alarm bell rings when it starts the escalator in order to remind the passengers of the security matters.	●		
18. 扶手带断裂保护装置: Control device for handrail breakage:	当扶手带断裂时,自动扶梯将停止运行。 When the handrail is broken, the escalator will automatically stop the operation.	●		
19. 围裙板刷: Skirt panel brush:	可选用的安全装置。在围裙板和梯级之间装有刷子使乘客的鞋子不会碰到围裙板(不仅限于自动扶梯)。 It is a selective safety device. The brush that has been installed between the skirt panel and the step will prevent the passengers from touching the skirt panel. (It is not merely restricted to the escalator.)	●		
25.VVVF 变频控制技术: VVVF variable frequency energy-saving system:	选用频率变换器后,能有效的降低能源消耗。 When chooses the frequency converter,it can effectively reduce the energy consumption.	●		
26. 梳齿照明: Comb illumination:	照明被安装在靠近梳齿板旁的围裙板上,为梯级和梳齿板提供照明以方便乘客安全的乘坐自动扶梯。 The illumination has been installed in the skirt panel near the comb plate. It offers the lighting for the step and the comb plate. It is more convenient for the passengers to up and down the escalator.	○		
27. 扶手照明: Handrail illumination:	扶手照明安装在扶手支架内,柔和的光线为运行中的自动扶梯添加了几分灵气。 The handrail illumination has been installed in the handrail frame. The gentle light adds charm to the running escalator.	○		
28. 自动启动 / 停止: Automatic start/stop:	位于楼层板附近的红外线传感器可以检测到进入楼层板的乘客,并自动开始运行,当所有乘客离开后会自动停止运行,以节约能耗。有扫描传感器和传统的导向杆方式可供选择。 The infrared ray sensor which is near the floor plate can detect the passenger that enter into the floor plate. Then it will automatically start the operation. After all the passengers leave, it will automatically stop the operation again in order to save the energy loss. Scanning sensor and traditional guide rod are available for your choice.	○		
29. 安全制动器: Fail-safe brake:	当驱动链断裂、梯级和扶手带运行方向与指定方向相反时,辅助制动器制停扶梯。当扶梯 H>6m 或人行道时必配。 When the chain drive breaks or the steps and handrail operating in the opposite direction of the specified direction, the assistant brake will cease the escalator. When the height of the escalator is over 6 meters, or on the pavement it is necessary to be equipped with this device.	○		
20. 扶手带防静电 Anti-static electricity device of the handrail belt	21. 梯级(踏板)防静电 Anti-static electricity device of the steps board	22. 梯级(踏板)遗失保护 The steps (pcdal) loss protection	23. 故障显示 Fault display	24. 自动加油功能 Automatic refueling function

Freight elevator function table

货梯功能表

标配

选配

Standard

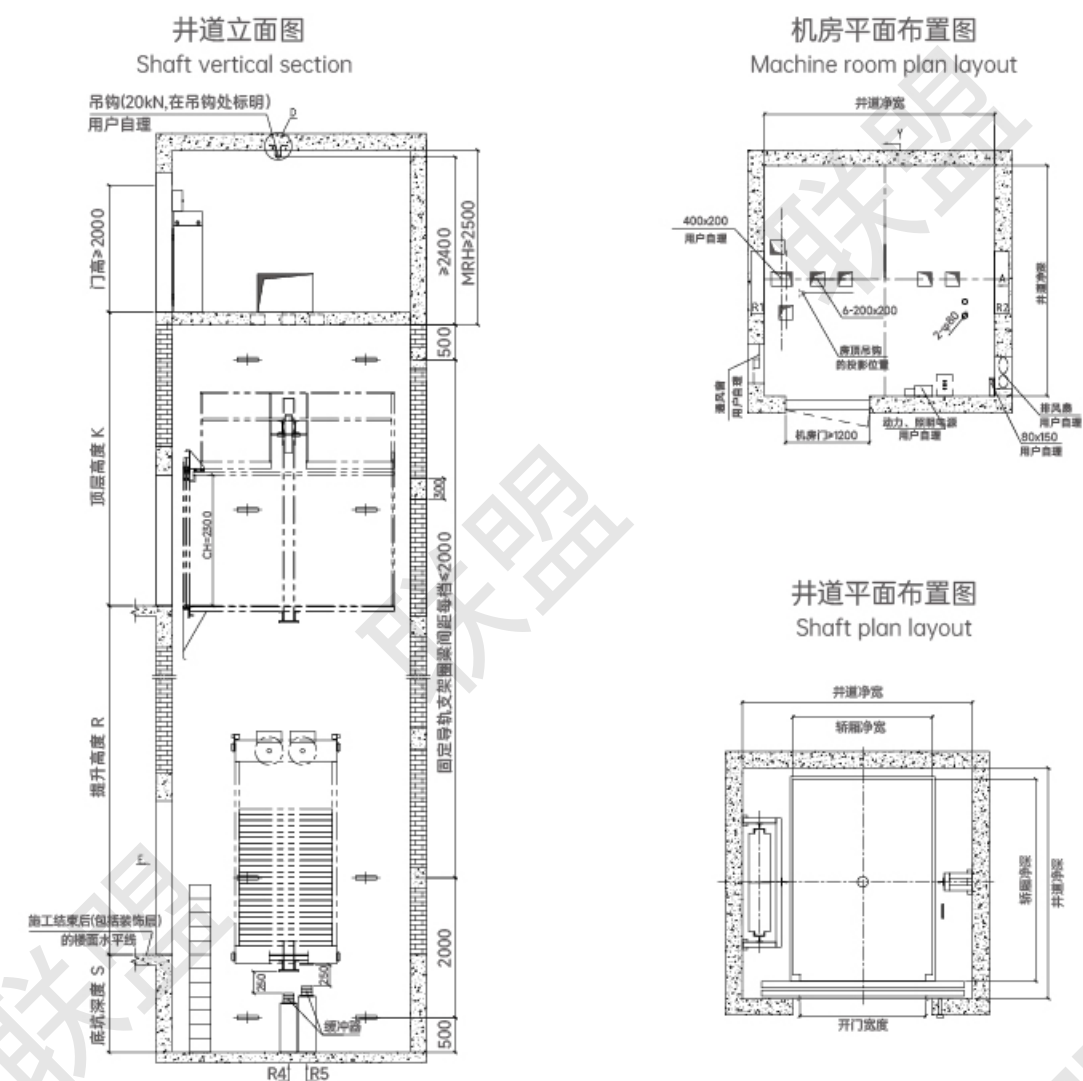
Optional

功能 Function	说明 Description	备注 Remarks
全集选控制 All selective collective control	电梯在运行过程中,在响应轿厢内指令信号的同时,自动响应上下召唤按钮信号,任何楼层的乘客都可以通过登记上下召唤信号召唤电梯。 When the elevator travels, at the same time of responding the car command signal. It automatically responds up / down calling signal. The passenger at any floor can call the elevator through registering up / down calling signal.	●
开门保持功能 Door-opening function	在操作盘上安装有开门保持按钮,动作后可延长开门时间。 If you press "door-opening button" in operation panel, it can prolong door-opening time.	●
检修运行操作 Inspection running operation	进入检修状态时,电梯以低速点动运行。 When entering inspection operation, the car comes into inching operation at low speed.	●
直接停靠 Direct parking	电梯完全按照距离原则减速,平层时无任何爬行。 When the elevator decelerates according to distance principle, it does not crawl at all in leveling.	●
慢速自救运行 Slow self-rescue operation	当电梯处于非检修状态下,且未停在平层区,此时只要符合启动的安全要求,电梯将自动以慢速运行至平层区,开门放人。 When the elevator is under non-inspection condition and it does not park at leveling zone, it slowly and automatically runs to leveling zone, opens the door and releases the passengers.	●
紧急救援运行 Emergency rescue running	设置紧急电动运行开关,以替代手动盘车装置。 It sets "emergency electric running switch" to replace for manual jigger.	●
锁梯服务 Locking service	在基站召唤盒上安装有锁梯开关,开关动作后,电梯只响应轿厢内指令。之后运行至基站开门后 10 秒左右关门停梯。 Locking switch is installed in home landing calling box. After the switch acts, it only responds the car command. It then runs to home landing, opens the door for about 10 second, shuts the door and stops.	●
自返基站 Automatic return to home landing	电梯在一段时间内无运行指令时,会自动返回基站待梯。 If the elevator does not have running command for certain period of time, it automatically returns to homelanding andwaits for the calling.	●
待梯时轿内照明、风扇自动断电 Automatic cut-off of fan, lightingin the car in waiting condition	如电梯无指令和外召登记超过 5 分钟,轿厢内照明、风扇自动断电。但在接到指令或召唤信号后,又会自动上电投入使用。 If the elevator has no command / calling register for over 5 minutes, it automatically cuts off fan, lighting in the car. At receiving the command / calling signal, it starts again.	●
服务楼层设置 Setting of service floor	系统可根据需要灵活选择关闭或激活某个或多个电梯服务楼层及停站楼 The system can flexibly shuts / activates certain / multiple elevator service floor(s) parking floor(s) according to actual requirements	●
楼层位置信号的自动修正 Automatic correction of floor position signal	系统运行时,在每个终端开关动作点和每层楼平层开关动作点都对电梯的位置信号以自学习时得到的位置数据进行修正。 When the system runs, it will correct the position data in each terminal switch action-point and leveling switch action-point at each floor through self-tuning.	●
点阵式楼层显示器 Dot-matrix floor display	在轿厢内、轿厢外都安装有点阵显示器,即时显示电梯运行状态。 Dot matrix display is available inside / outside the car to instantly show the elevator running condition.	●
特殊楼层显示 Special floor display	可任意设定楼层显示字符,方便现场特殊要求。 It can freely set "floor display characters". It is convenient for special requirements at site.	●
反向自动消号 Automatic cancel in reversal operation	当电梯运行到终端层站或者运行方向改变时,将此前所登记的反向指令全部自动取消。 When the elevator runs to terminal landing or it changes the running direction, it will then cancel allthe previously-registered reversal commands.	●
开关门故障保护 Protection to door opening/closing trouble	当检测到开关门超过设定次数后仍未有效关门,系统停止开关门并输出故障。 When door opening / closing times exceed set times, it still can not open / close effectively, the system stops its operation and outputs the trouble.	●
上行超速保护 up-motion over-speed protection	电梯上行速度超过设定值时,制动器动作,使电梯停止运行。 When up speed of the elevator exceeds set value, rope gripper acts to stop the operation.	●
下行超速保护 Down-motion over-speed protection	电梯下行速度超过设定值时,限速器、安全钳会动作,使电梯停止运行。 When down speed of the elevator exceeds set value, speed limiter and safety tongs act to stop the operation.	●
开门按钮开门 Door opening button	电梯停在门区时,可以在轿厢中按开门按钮使电梯已经关门或尚未关闭的门重新打开。 When the elevator stops at door zone, press "door opening button" in the car so that the closed / closing door opens again.	●
关门按钮提前关门 Door closing button to shut the door in advance	在保持开门的状态时,可以按关门按钮使门立即响应关门动作,提前关门 When the door opens, press "door closing button" can let the door immediately respond door-closing action and shut the door in advance.	●
重复开门 Repeated door opening	如果电梯持续关门 15 秒后,尚未使门锁闭合,电梯就会转换成开门状态。 If the elevator repeatedly closes for 15 second, and it still does not close effectively it will then turn to opening condition.	●
满载直驶 Full-load by-pass	当轿内满载时,电梯不响应经过的召唤信号而只响应指令信号。 When the car is full of load, the elevator will not respond any passed calling signals, It only responds the command signal.	●
发电功能 Generating function	轿厢空载上行和满载下行过程中产生电能供周边设备使用。 The car generates electric energy for the peripheral equipment in the process of no-load up and full load down.	●

功能 Function	说明 Description	备注 Remarks
超载保护 Overload protection	电梯载重超过设定值时,电梯鸣叫提示超载,开门不运行。 When the elevator load exceeds set value,the elevator rings to remind of overload. It opens the door and does not operate.	●
火灾紧急返回运转 Emergency return operationat fire disaster	火灾开关动作后,电梯直驶至消防阶,开门放人后停梯。 After "fire switch" acts, the elevator straightly travels to fire step, after it opens the door and releases the passengers, it then stops the operation.	●
独立运行 Independent running	通过动作开关,使电梯不响应外召,仅响应轿内指令。 Through action switch, the elevator no longer responds any outer calling. It only responds the car command.	●
逆向运行保护 Reversal running protection	电梯实际运行的方向与指令方向不一致时,就会立即紧急停车,故障报警 When the actual elevator running direction does not coincide with the command direction , it immediately makes emergency stop and alarms the trouble.	●
防打滑保护 Anti-skid protection	电梯连续运行了限制器规定的时间,而平层开关没有动作,就停止轿厢一切运行。 When the continuous elevator operation exceeds the time stipulated by the limiter and leveling switch does not act, it then stops all the car running.	●
故障自诊断 Trouble self-diagnosis	控制器可以记录最新的 6 个故障,以便迅速排除故障,恢复电梯运行。 The controller can record 6 latest troubles so as to rapidly remove the trouble and restore the elevator running.	●
警铃 Alarm bell	紧急时,按下轿厢内的警铃按钮,电梯轿顶上的警铃会鸣响。 In emergency case, press " alarm bell button" in the car, it rings the alarm bell on top of the elevator car.	●
应急照明 Emergency lighting	停电时,自动点亮轿厢内的应急照明灯。 In power failure, it automatically brightens emergency lamp in the car.	●
五方通话装置 Five-party conversation device	通过对讲机,可以让轿厢、轿顶、机房、底坑、值班室之间相互通话。 Through intercom, people can talk amid the car, car-top, machine room, pit and duty-room.	●
门光幕保护 Door light-curtain protection	当两扇门的中间有东西阻挡时,门区光幕装置会动作,使电梯开门。 When something hinders in the middle of 2 door leaves, light-curtain device in door zone acts to open the door.	●
防终端越程保护 Anti terminal over-travel protection	电梯的上下终端都装有终端减速开关和终端极限开关,以保证电梯不会超越行程。 Up / down terminal of the elevator installs terminal deceleration switch and terminal limit switch to ensure that it does not over-travel.	●
减速开关故障保护 Protection against deceleration switch trouble	在减速开关失效的状态下,电梯紧急停靠,防止冲顶或蹲底。 When deceleration switch is ineffective, the elevator makes emergency parking to prevent it from rushing to top / bottom.	●
安全回路故障保护 Protection against safety loop trouble	系统收到安全回路故障信号就紧急停车,并在有故障时防止电梯运行。 When the system receives safety loop trouble signal, it makes emergency stop. Under the troubled condition, it prevents from the elevator running.	●
轿厢防意外移动 Elevator cab prevents accidental movement	电梯在开门状态下,轿厢出现意外移动时,使轿厢停止移动。 When the elevator is in the open state, if there is accidental movement, the elevator cab can present the movement.	●
开门再平层 Door-opening re-leveling	电梯门开启状态,由于重量等原因导致电梯平层不准时,会自动校正平层 When the elevator door opens, if it makes inaccurate leveling due to weight etc., I will then automatically correct the leveling.	○
消防员操作 Fireman operation	消防员开关动作时,电梯运行至基站开门放人后,专供消防员操作。 When fireman switch acts, after the elevator runs to home landing; opens the door and releases the passengers, it is then for special use of firemen.	○
副操作盘操作 Operation of secondary operation panel	在有主操作盘的同时,可以选配安装副操作盘,方便乘客使用。 At the same time of having main operation panel, it can choose optional secondary operation panel. It is convenient for the use of the passengers.	○
前后门操作 Front-and-rear door operation	电梯可同时具备前后门,并能分别控制,安全方便。 The elevator can simultaneously have front and rear doors for respective control. It is safe and convenient.	○
联动运行 Linkage operation	两台电梯共用外召信号,自动调度召唤响应,提高运行效率。 When 2 elevators share outer calling signal, it automatically dispatches the calling response. It thus increases the running efficiency.	○
群控运行 Group-supervision running	多台电梯(3-8 台)共用外召信号,自动调度召唤响应,提高运行效率。 When multiple elevators (3-8 elevators) shore outer calling signal, it automatically dispatches the calling response.It thus increases the running efficiency.	○
称重信号补偿 Counterweight signal compensation	系统可以在高端应用场合中使用称重信号,对电梯的启动进行补偿。 The system can pre-output the torque which matches with the corresponding load to ensure the comfortable elevator travel.	○
预转矩设置 Pre-torque setting	系统可预先输出与相应的负载匹配的转矩,以保证电梯的舒适感。 In automatic condition, the door keeps open without any command. And the lift immediately shuts the door and responds to the command if any.	○
司机操作运行 Driver's operation	电梯轿厢内安装司机控制开关动作后,只能供轿厢内司机操作使用。 When the elevator car installs driver's control switch, after it acts, it can only be used for the driver's operation in the elevator car.	○
轿内摄像功能 Car camera functions	在轿厢中安装摄像头,可监视轿厢内状况。 The car installs camera to monitor the car conditions.	○
提前开门 Open the door ahead of time	汽车开至厅门 30-50 公分处,电梯自动返基层开门(汽车电梯)。 opening the door in advance: the car opens to the hall door 30-50 centimeters, the elevator automatically returns to the basic level to open the door (car elevator)	○
蓝牙选层 Bluetooth layer selection	车主在汽车内可以通过蓝牙连接电梯,用手机选层(汽车电梯)。 opening the door in advance: the car opens to the hall door 30-50 centimeters, the elevator automatically returns to the basic level to open the door (car elevator)	○

Construction Parameters

小机房载货电梯土建参数

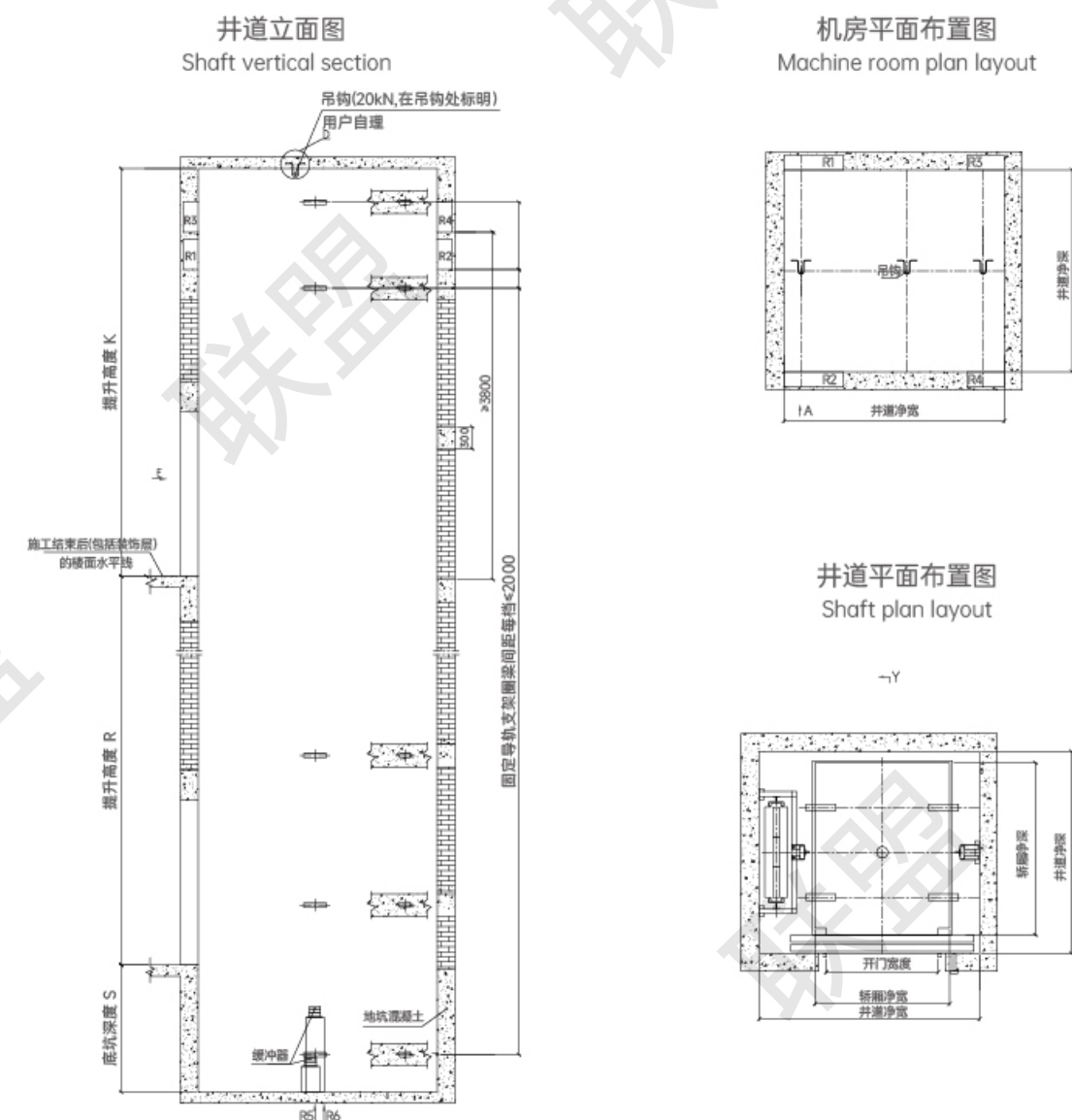


电梯型号 Elevator model	额定载重 Rate load (kg)	速度 Speed (m/s)	轿厢尺寸 Car size (mm)	井道尺寸 Shaft size (mm)	机房尺寸 Machine room size (mm)	开门方式及尺寸 Door opening size (mm)	底坑深度 Pit depth (mm)	顶层高度 Over head (mm)	主机功率 Host power (kw)	备注 Remarks
UN-FS	2000	0.5-1.0	1800*2300	2900*2700	2900*2700	中分双折 1500*2100	1500	4500	6.7-13.4	
	2000	0.5-1.0	1800*2300	2900*2850	2900*2850	中分双折 1500*2100	1500	4500	6.7-13.4	贯通
	3000	0.5-1.0	2000*2900	3300*3300	3300*3300	中分双折 1800*2100	1500	4500	10.6-22.2	
	3000	0.5-1.0	2000*2900	3300*3450	3300*3450	中分双折 1800*2100	1500	4500	10.6-22.2	贯通
	4000	0.5-1.0	2200*3350	3750*3750	3750*3750	中分双折 2000*2100	1500	4500	13.6-27.2	
	4000	0.5-1.0	2200*3350	3750*3900	3750*3900	中分双折 2000*2100	1500	4500	13.6-27.2	贯通
	5000	0.5-1.0	2500*3500	3900*3900	3900*3900	中分双折 2000*2100	1500	4500	17-34	
	5000	0.5-1.0	2500*3500	3900*4050	3900*4050	中分双折 2000*2100	1500	4500	17-34	贯通
	8000	0.5	2500*5500	4500*5900	3300*3450	中分双折 2500*2100	1500	5000	27.2	贯通
	10000	0.5	2600*6500	4500*7050	3750*3900	中分双折 2500*2100	1800	4500	34	贯通
	16000	0.5	3850*6150	5000*6700	5000*6700	中分双折 2700*2100	1800	4800	51.9	贯通

注：以上尺寸仅供设计参考，具体尺寸以合同约定时提供的土建图为准。
Note: Only for reference, final manufacture please follow contract

Construction Parameters

无机房载货电梯土建参数

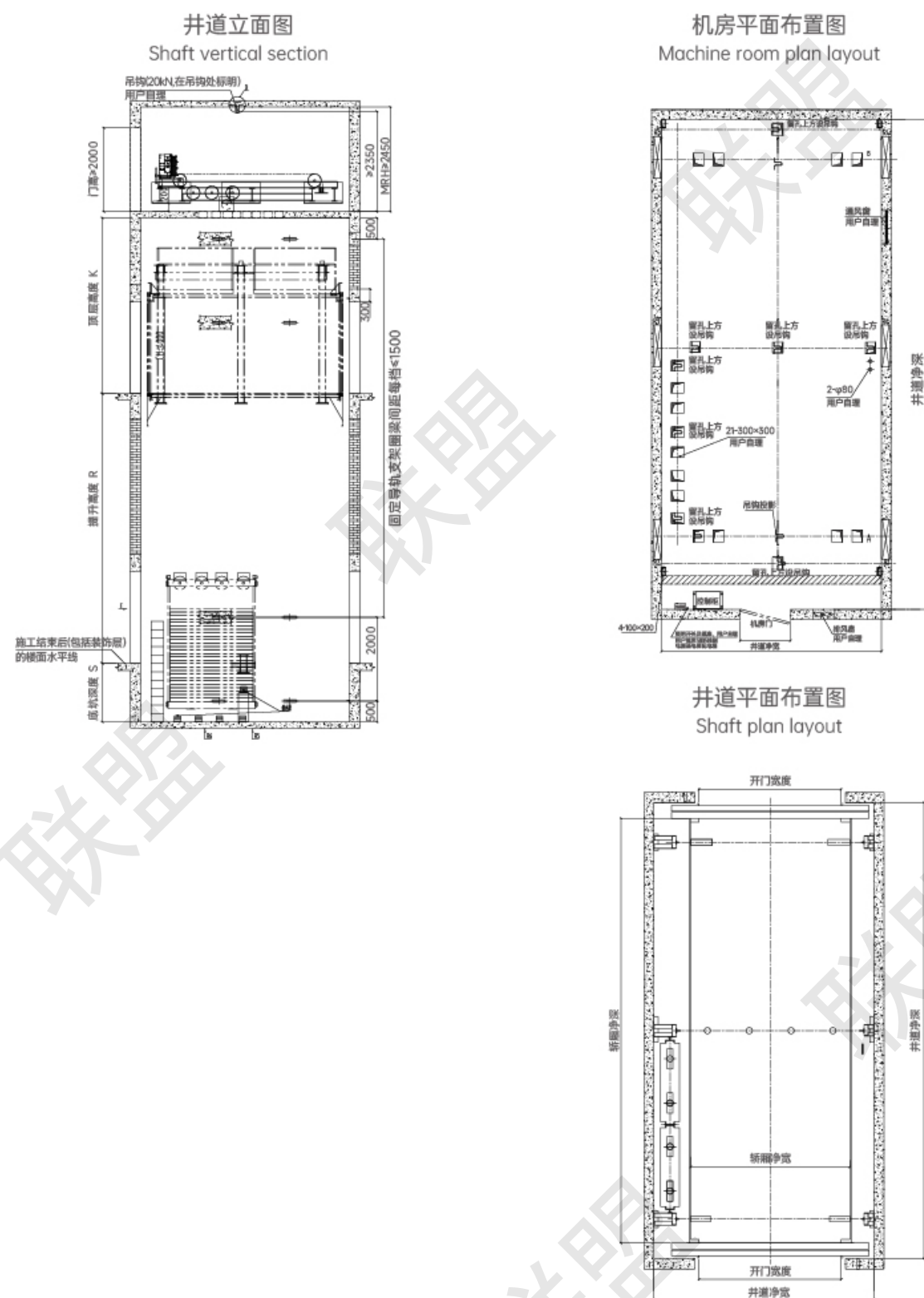


电梯型号 Elevator model	额定载重 Rate load (kg)	速度 Speed (m/s)	轿厢尺寸 Car size (mm)	井道尺寸 Shaft size (mm)	开门方式及尺寸 Door opening size (mm)	底坑深度 Pit depth (mm)	顶层高度 Over head (mm)	主机功率 Host power (kw)	备注 Remarks
UN-FN	2000	0.5-1.0	1800*2300	2950*2700	中分双折 1500*2100	1500	4500	6.7-13.4	
	2000	0.5-1.0	1800*2300	2950*2850	中分双折 1500*2100	1500	4500	6.7-13.4	贯通
	3000	0.5-1.0	2000*2900	3400*3300	中分双折 1800*2100	1500	4500	10.6-22.2	
	3000	0.5-1.0	2000*2900	3400*3450	中分双折 1800*2100	1500	4500	10.6-22.2	贯通
	4000	0.5-1.0	2200*3350	3600*3750	中分双折 2000*2100	1500	4500	13.6-27.2	
	4000	0.5-1.0	2200*3350	3600*3900	中分双折 2000*2100	1500	4500	13.6-27.2	贯通
	5000	0.5-1.0	2500*3500	3900*3900	中分双折 2000*2100	1500	4800	17-34	
	5000	0.5-1.0	2500*3500	3900*4050	中分双折 2000*2100	1500	4800	17-34	贯通
	6000	0.5-1.0	2600*4000	4000*4400	中分双折 2000*2100	1600	5000	17-34	不贯通

注：以上尺寸仅供设计参考，具体尺寸以合同约定时提供的土建图为准。
Note: Only for reference, final manufacture please follow contract

Construction Parameters

大载重载货电梯土建参数

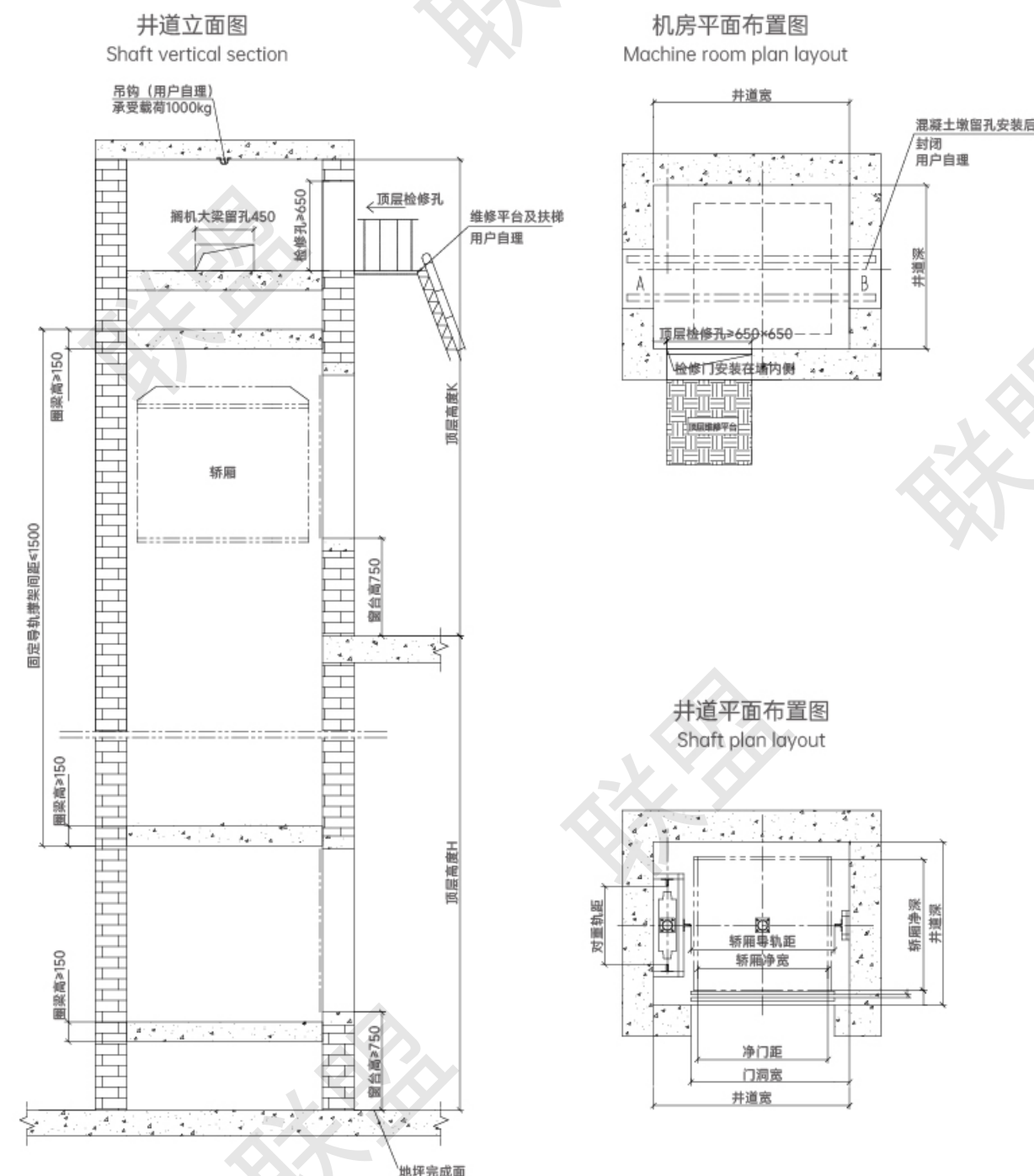


电梯型号 Elevator model	额定载重 Rate load (kg)	速度 Speed (m/s)	轿厢尺寸 Car size (mm)	井道尺寸 Shaft size (mm)	机房尺寸 Machine room size (mm)	开门方式及尺寸 Door opening size (mm)	底坑深度 Pit depth (mm)	顶层高度 Over head (mm)	主机功率 Host power (kw)	备注 Remarks
UN-FS	25000	0.5	3800*10750	5250*11300	5250*11300	中分双折 3000*3000	2000	5200	81.8	贯通

注：以上尺寸仅供设计参考，具体尺寸以合同约定时提供的土建图为准。
Note: Only for reference, final manufacture please follow contract

Construction Parameters

杂物电梯土建参数

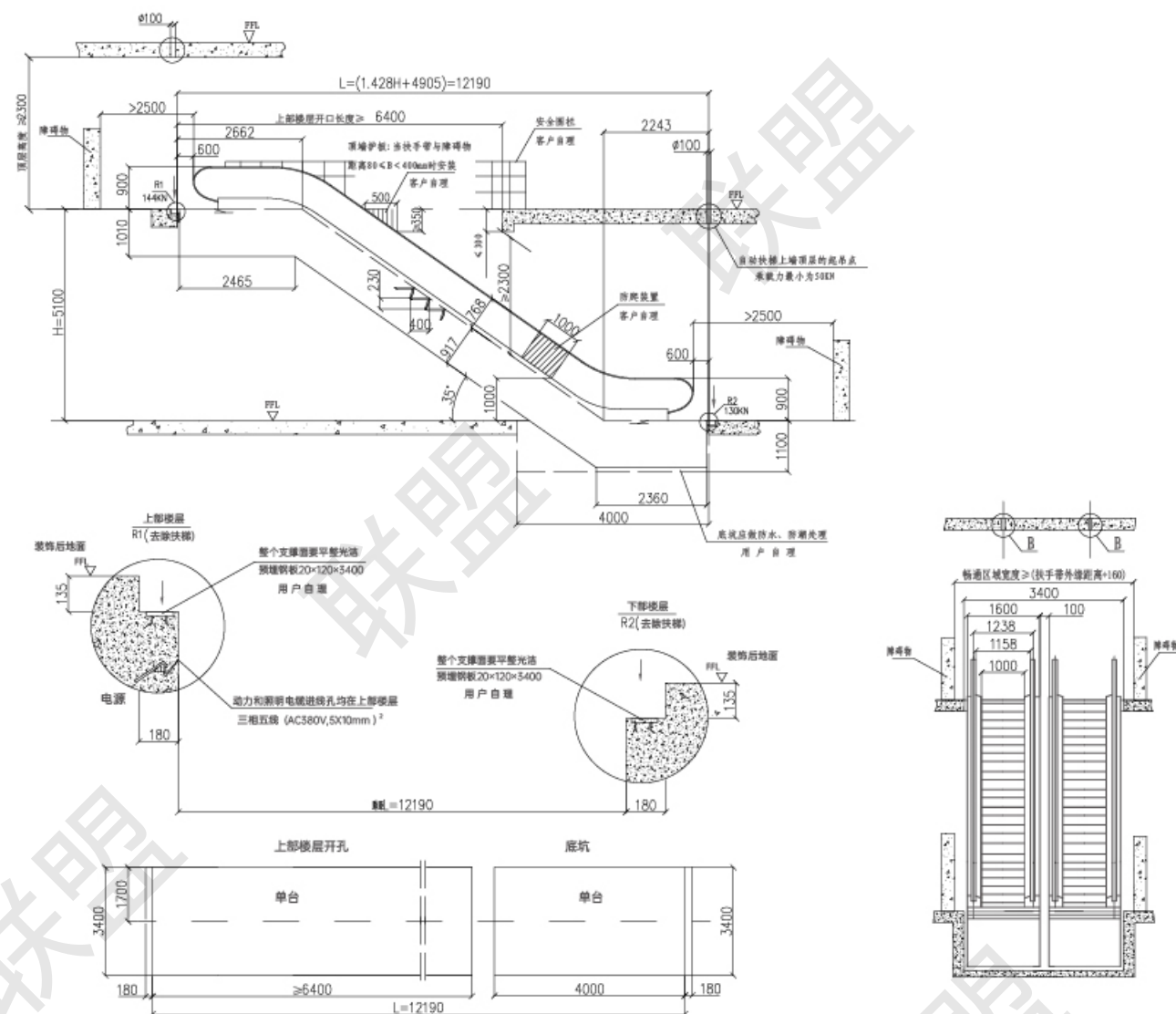


电梯型号 Elevator model	载重 Load (kg)	速度 Speed (m/s)	轿厢尺寸 Car size (mm)	井道尺寸 Shaft size (mm)	开门方式及尺寸 Door opening size (mm)	底坑深度 Pit depth (mm)	顶层高度 Over head (mm)
UN-DS(落地)	100	0.4	800*800*800	1350*1050	手动上下直分 800*800	800	3500
	200	0.4	1000*1000*1000	1550*1250	手动上下直分 1000*1000	800	3500
	300	0.4	1000*1000*1200	1500*1250	手动上下直分 1000*1200	1000	3500
UN-DS(窗台)	100	0.4	800*800*800	1350*1050	手动上下直分 800*800		4000
	200	0.4	1000*1000*1000	1550*1250	手动上下直分 1000*1000		4000
	300	0.4	1000*1000*1200	1500*1250	手动上下直分 1000*1200		4000

注：以上尺寸仅供设计参考，具体尺寸以合同约定时提供的土建图为准。
Note: Only for reference, final manufacture please follow contract

Construction Parameters

35°自动扶梯土建参数

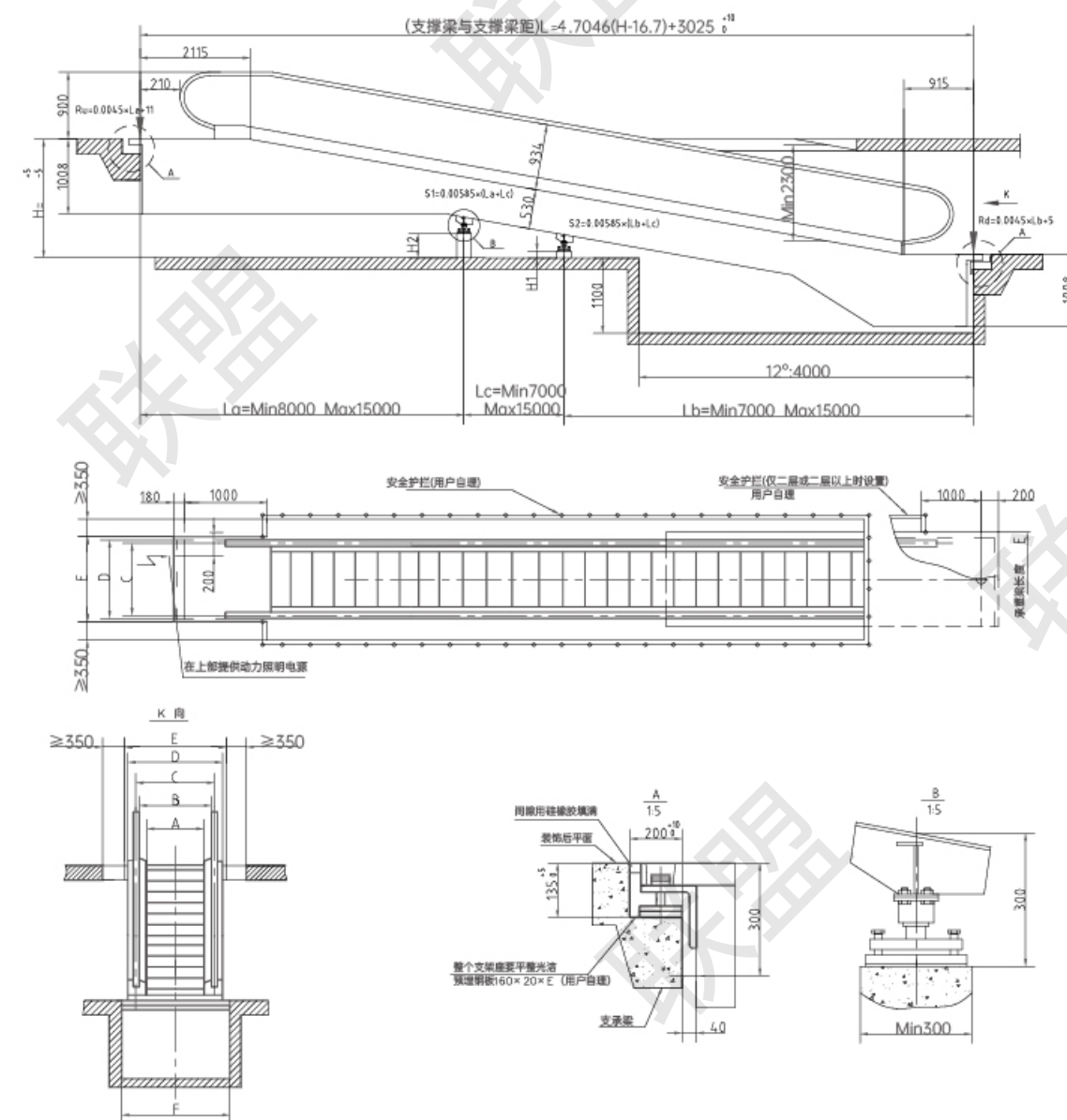


型号 Model	SLF35-600 (4500p/hour)				SLF35-800 (6750p/hour)				SLF35-1000 (9000p/hour)			
提升高度 Traveling height	承重力 Supporting load			主机功率 Motor power	承重力 Supporting load			主机功率 Motor power	承重力 Supporting load			主机功率 Motor power
MM	N.W. KN	R1 KN	R2 KN	KW	N.W. KN	R1 KN	R2 KN	KW	N.W. KN	R1 KN	R2 KN	KW
3000	54	43	39	5.5	56	49	44	5.5	60	56	50	5.5
3500	57	43	41	5.5	60	52	47	5.5	64	60	53	8.0
4000	60	49	44	5.5	63	56	50	5.5	67	64	57	8.0
4500	64	52	46	5.5	66	59	50	8.0	71	67	60	8.0
5000	67	54	49	8.0	70	62	56	8.0	74	71	64	8.0
5500	70	57	51	8.0	73	65	59	8.0	82	77	69	11
6000	73	60	54	8.0	76	69	61	8.0	85	81	72	11

型号 Model	A	B	C	D	E
UN-E	600	837	1200	1260	1837
	800	1037	1400	1460	2037
	1000	1237	1600	1660	2237

注: 以上尺寸仅供设计参考, 具体尺寸以合同签约时提供的土建图为准。
Note: Only for reference, final manufacture please follow contract

Construction Parameters



单位 (Measurement): 毫米(mm)

建筑支撑力包括荷载 (KN) The construction supporting force includes the vibration load		
无中间支撑 No intermediate supporting	1个中间支撑 One intermediate supporting	2个中间支撑 Two intermediate supporting
Ro=0.0045xL+11	Ro=0.0045xLa+11	Ro=0.0045xLa+11
	Ru=0.0045xLb+5	Ru=0.0045xLb+5
Ru=0.0045xL+5	S1=0.00585x(La+Lb)	S1=0.00585x(La+Lc)
		S2=0.00585x(Lb+Lc)

型号 Model	提升高度 Traveling height		中间支撑 Intermediate supporting		La (mm)	Lb (mm)	Lc (mm)
	从 From	至 To	S1	S2			
UN-WM	1601	2663	-	-	-	-	-
	2664	4151	1	-	L-7000	7000	-
	4152	5851	1	-	15000	L-15000	-
	5852	6000	1	1	15000	7000	L-22000

注: 以上尺寸仅供设计参考, 具体尺寸以合同签约时提供的土建图为准。
Note: Only for reference, final manufacture please follow contract